

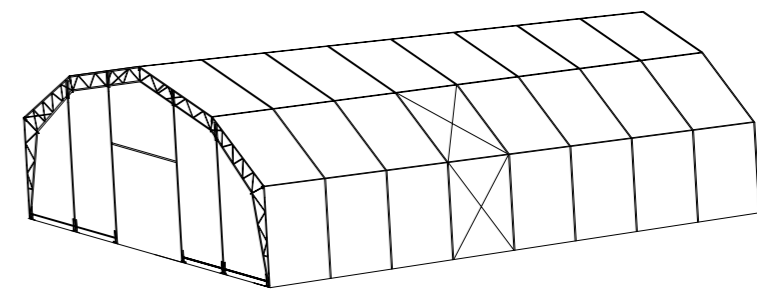
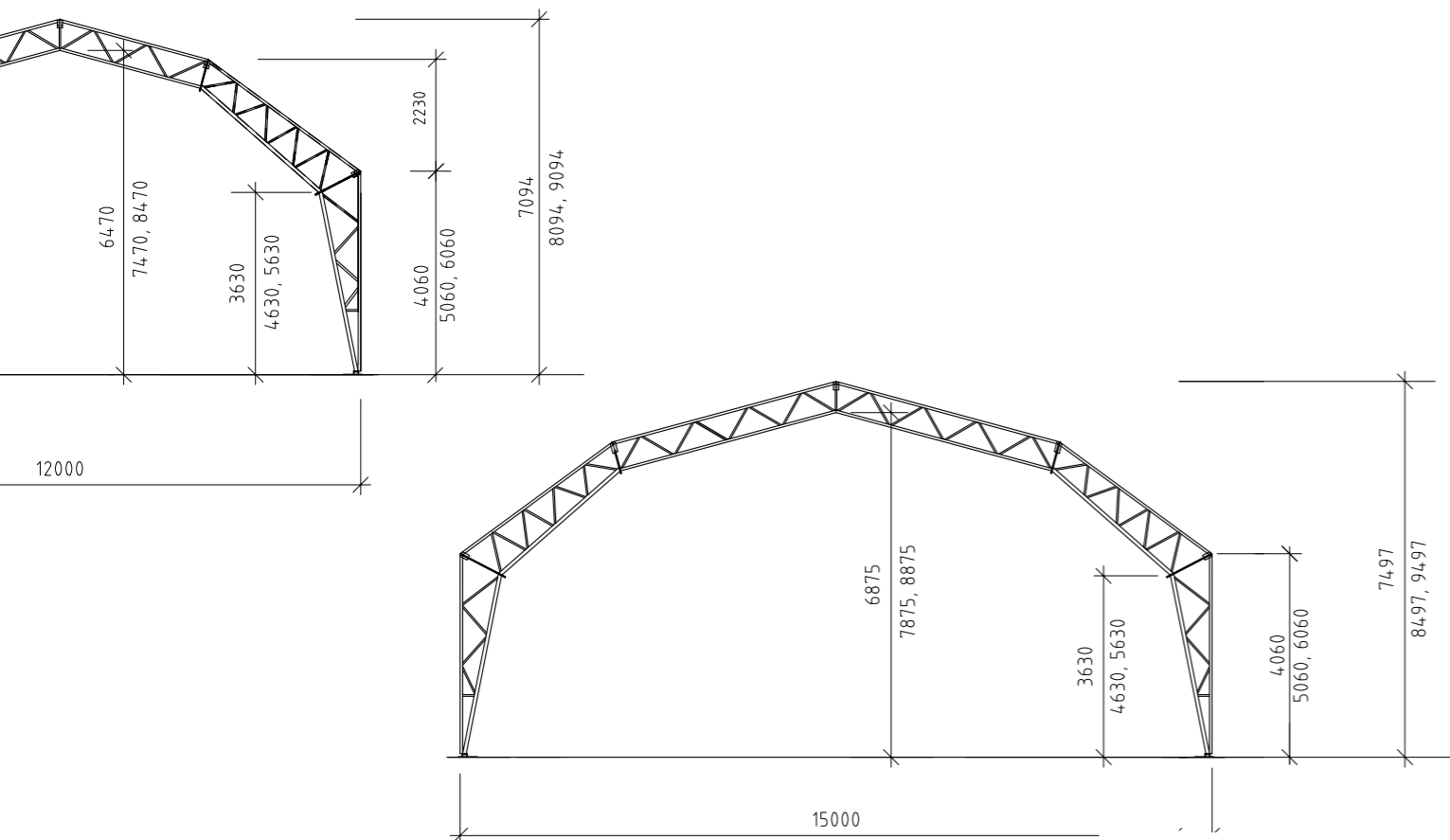
Dimensions

Width: 12/15 m
 Length: Minimum 2 sections or as required
 Side height: 3–8 m
 Port: Two-section sliding door 4x4 (wxh) standard

Technical description

Covering fabric: Painted full Panama polyester weave (weight 900 g/m²)
 Framework: Hot dip galvanized steel framework
 Snow zone: 1.0–3.5
 Wind loading: Dimensioned for up to 58 mph.

The hall can be configured for every individual requirement and special loading. As standard, the hall is dimensioned in accordance with National Board of Housing and Physical Planning construction rules for snow loading and wind loading in safety class 2.



12/15 m

A tall and wide hall if you need a permanent or temporary installation for a warehouse, car showroom, hangar, construction hall or manufacturing hall. You can choose the side height to suit the working vehicles you use. We supply and erect the hall with our standard doors, unless your requirements demand something else. The 12/15 m hall is anchored with earth anchors as standard, but we can also use an in-situ cast concrete base or prefabricated concrete modules.