



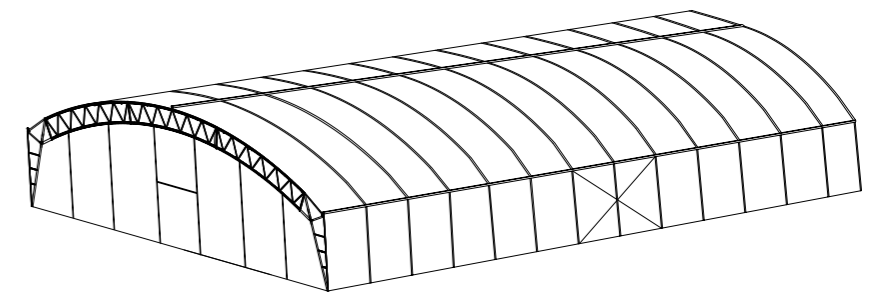
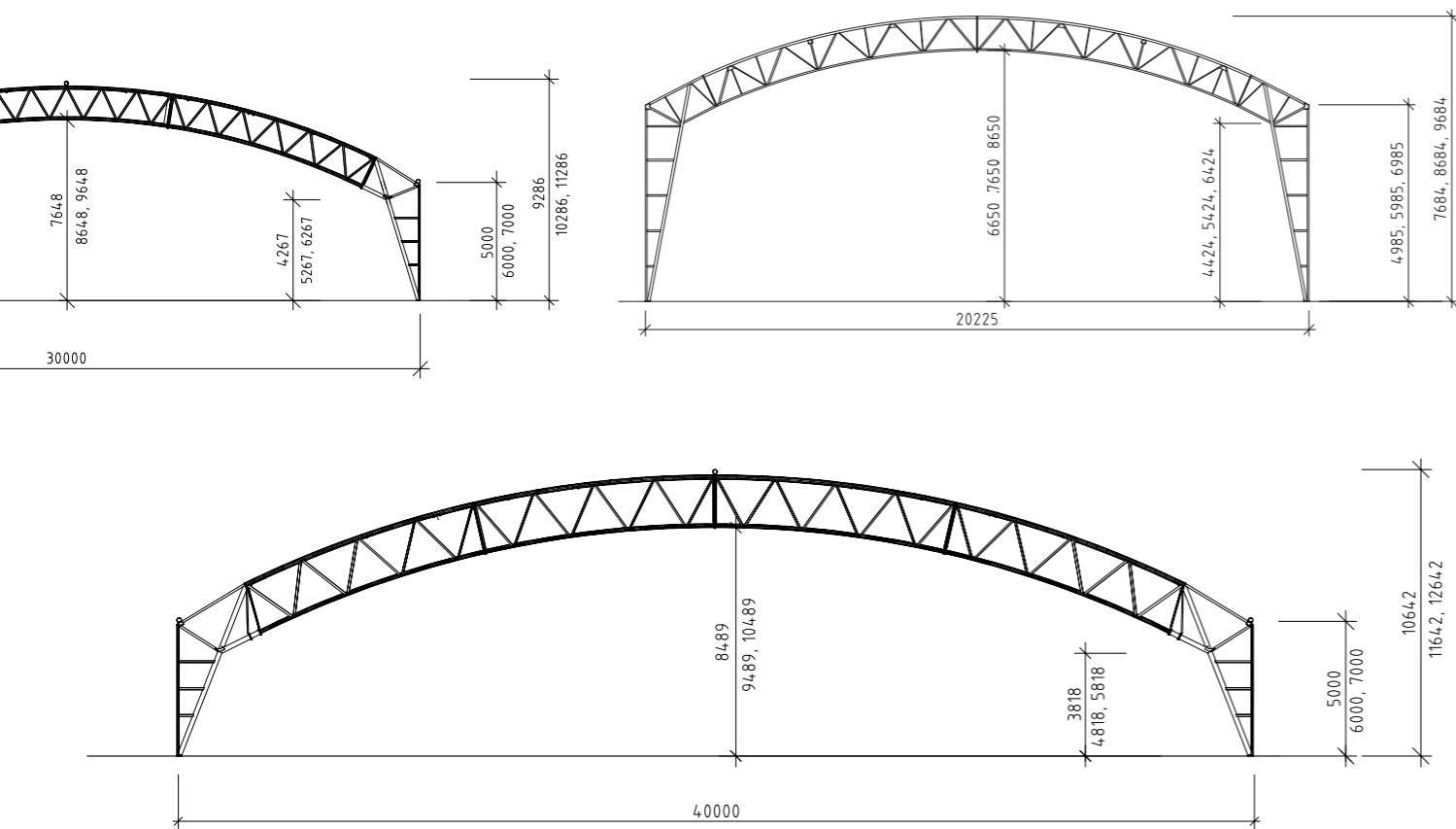
### Dimensions

Width: 20–40 m  
 Length: Minimum 3 sections or as required  
 Side height: 4–9 m  
 Door: Two-section sliding door 4x4 (wxh) standard

### Technical description

Covering fabric: Painted full Panama polyester weave (weight 900 g/m<sup>2</sup>)  
 Framework: Hot dip galvanized steel framework  
 Snow zone: 1.0–3.5  
 Wind loading: Dimensioned for up to 58 mph.

The hall can be configured for every individual requirement and special loading.  
 As standard, the hall is dimensioned in accordance with National Board of Housing and Physical Planning construction rules for snow loading and wind loading in safety class 2.



## 20-40 m

When you need lots of space, the 20-40 m hall can be recommended. The hall is generally used for applications such as warehouses, sports halls, production and manufacturing halls. Despite its size, it is both versatile and flexible, and can be used for both permanent and temporary requirements. The hall can either be anchored to a foundation plate with earth spikes, an in-situ cast concrete base or prefabricated concrete modules. We supply and erect the hall with our standard doors, unless your requirements demand something else.