

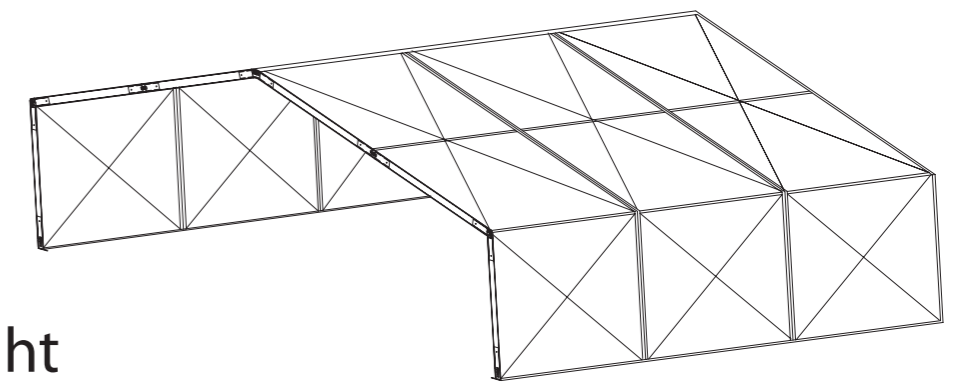
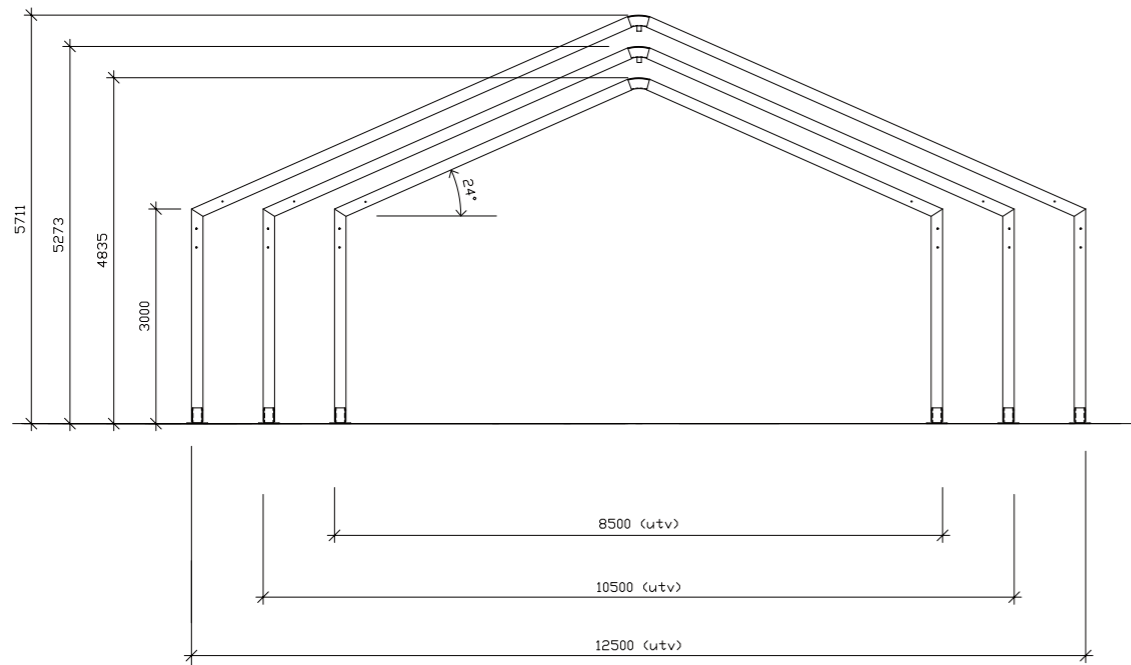


Dimensions

Width: 8.5, 10.5 and 12.5 m (external)
 Length: 3 m sections
 Ridge height: Varies, depending on the span
 Side height: 3 m
 Door: Tarpaulin door 3x3 m

Technical Description

Construction: Aluminium beams 100x70 mm
 Covering fabric: reinforced, PVC coated polyester weave, flameproofed M2
 Weight: app 650 g/m², thickness: 1 mm
 Standard colour: White
 Wind and snow loading: Dimensioned according to Work Environment Authority principles for small weather protection structures
 Weight: 8.5x6 m 787 kg, 10.5x6 m 972 kg, 12.5x6 m 1031 kg
 Installation: Anchored to the ground by earth spikes.



Gibson Light

This is a weathershelters structure for short and small projects. For example, if you are going to build a private house or only need a field workshop on site.

You can use Gibson Light to quickly and efficiently build weathershelters that will shield you from all weathers. It can be erected as a mobile roof protection or be anchored to the ground or scaffolding. The system has been designed to suit all types.