



### Dimensions

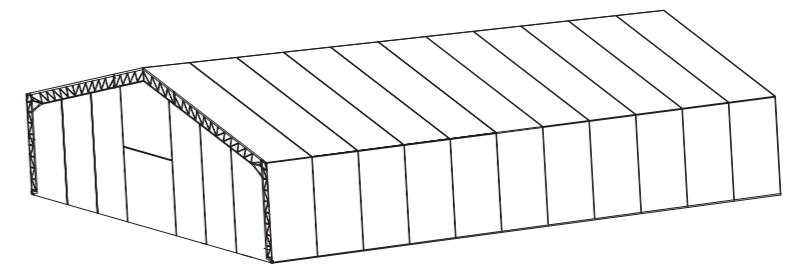
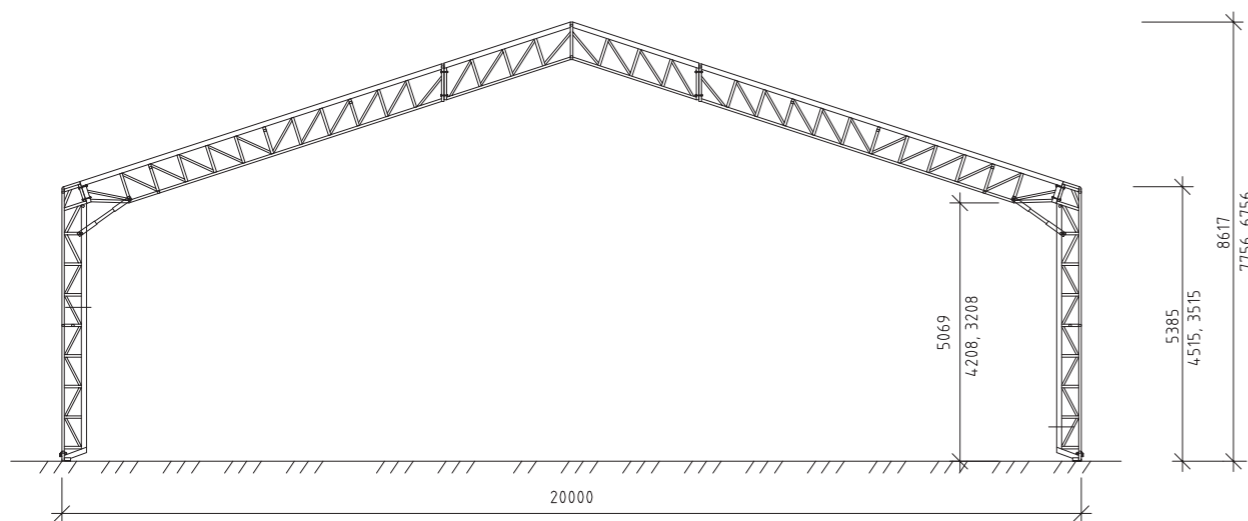
Length: Minimum 2 sections or as required  
 Side height: 3.5, 4.5 and 5.4 m  
 Port: Two-section sliding door 4x4 (wxh) standard

### Technical description

Covering fabric: Reinforced, plastic coated polyester weave. Flameproofed, self-extinguishing. (900 g/m<sup>2</sup>)  
 Framework: Hot dip galvanized steel framework  
 Snow zone: 1.0–3.5  
 Wind loading: Dimensioned for up to 58 mph

Tension bar: The hall is equipped with a tension bar for certain snow zones.

The hall can be configured for every individual requirement and special loading. As standard, the hall is dimensioned in accordance with National Board of Housing and Physical Planning construction rules for snow loading and wind loading in safety class 2.



## SwedHall

Thanks to its design, the Swedhall has low weight and is easy to erect. A large number of variants are available, to suit different applications and locations. The straight walls make this model particularly suitable for storing palletted goods. The SwedHall is easy to extend lengthways thanks to its modular system. It can be equipped with different types of doors and optional equipment such as an airlock, heating, ventilation system and dehumidifier can be installed.